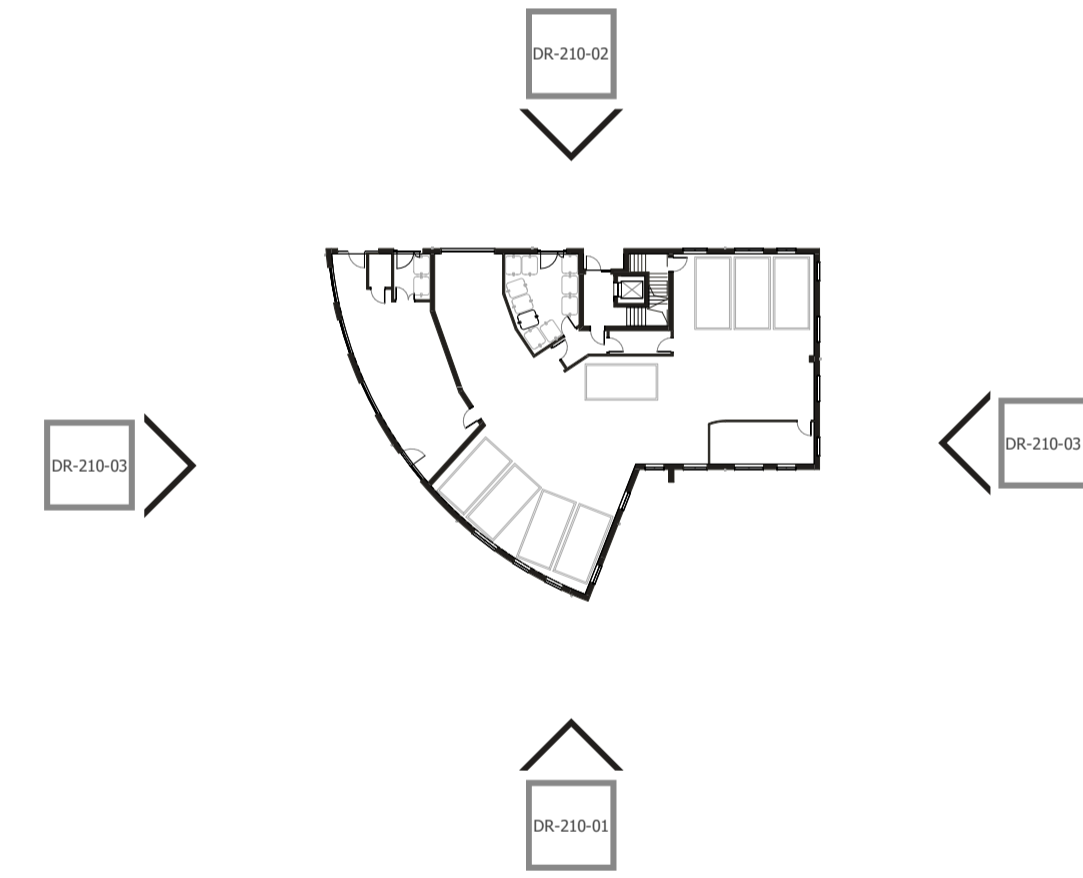




- External Envelope Materials**
- 1 Primary masonry facing material - Brick, lightbuff with texture and colour variegations
 - 1a Soldier-course/banding of primary masonry facing material
 - 2 Secondary masonry facing material - Facade stonework. Lightbuff to match local traditional 'Gritstone' Sandstone. Precise coursing sizes and masonry texture finish TBC
 - 2a Projecting string course of secondary masonry facing material
 - 3 Profiled (Standing Seam) Zinc or Zinc effect, natural finish, with matching flashings and metal work detailing
 - 4 Dark grey frames to fenestration: Polyester powder coated, 'Anthracite Grey' RAL 7016 (TBC)
 - 4a Dark grey infill panels to fenestration, for retail signage zone and areas requiring opaque/non-glazed panels. Locations TBC with unit fit-outs. Polyester powder coated, 'Anthracite Grey' RAL 7016 (TBC)
 - 4b Opaque glazed spandrel panels to selected areas of fenestration. Smoked/grey or colour tint to match the natural glazing
 - 4c Louvre panels/dummy panes to areas requiring connection to mechanical ventilation terminals. Locations TBC with unit fit-outs. Polyester powder coated, dark grey 'Anthracite Grey' RAL 7016 (TBC)
 - 5 Louvre screens to areas free/natural ventilation areas or mechanical ventilation terminals. Polyester powder coated, dark grey 'Anthracite Grey' RAL 7016 (TBC)
 - 6 Balcony and Juliet Balcony balustrade and handrail, to be colour matched to other fenestration framing/metal work. 'Anthracite Grey' RAL 7016 (TBC)
 - 7 Exposed rainwater goods to be colour matched to other fenestration framing/metal work. Dark grey 'Anthracite Grey' RAL 7016 (TBC)
 - 8 Rooftop louvre screens around partial/selected plant areas. Polyester powder coated, dark grey 'Anthracite Grey' RAL 7016 (TBC)



Key Plan - Block 2 Proposed Elevations

PROMENADE RAILING

South / Riverside Elevation
1 : 100

C May 2022 Planning Application Issue			
A	-	-	-
Rev	Date	Notes	Revised
B2-DR-210-01 C			
Drawing Title			
Block 2 - South / Riverside Proposed Elevation			
Project			
Riverside development Stamford St / Old Street, Stalybridge			
Client			
Gerard McDermott KC			
Draw Number	Size	Scale	
2493	A1	As Indicated	
Drawn	Approved	Date	
KC	CP	Nov '22	

Millson GROUP
www.millsongroup.co.uk
info@millsongroup.co.uk
0161 228 9558

THIS DRAWING (INCLUDING THE COPYRIGHT OF MILLSON GROUP LTD, AND IT MUST NOT BE COPIED OR REPRODUCED WITHOUT WRITTEN CONSENT. ALL RIGHTS ARE RESERVED AND SHALL REMAIN THE PROPERTY OF MILLSON GROUP LTD. NO ATTEMPT SHOULD BE MADE TO SCALE FROM THE DRAWING MANUALLY. ALWAYS USE IT FOR REFERENCE ONLY. ANY VARIATION BETWEEN DRAWINGS AND SITE CONDITIONS ARE TO BE REPORTED TO THE ARCHITECT IMMEDIATELY. ALL CONTRACTORS MUST FIRST GET THE SITE AND BE SOLELY RESPONSIBLE FOR TRAFFIC AND PARKING ALL OPERATIONS RELATIVE TO THE WORK THEY ARE REQUIRED TO CARRY OUT. THIS DRAWING MUST NOT BE USED ON SITE UNLESS ISSUED FOR CONSTRUCTION.